

# 2015 ANNUAL REPORT



empowering the homeless  
improving communities

The **A**ssociation of **C**ommunity **E**mployment  
Programs for the Homeless



# TABLE OF CONTENTS

<b>Executive Message</b>	<b>1</b>	<b>Supported Employment</b>	<b>Program Partners</b>	<b>11</b>
<b>Our Mission</b>	<b>2</b>	<b>Opportunities</b>	<b>Financials</b>	<b>12</b>
<b>Our Programs</b>	<b>3</b>	<b>Employment Placements</b>	<b>Staff</b>	<b>13</b>
<b>2015 by the Numbers</b>	<b>4</b>	<b>Partnering with CWE &amp; CSS</b>	<b>Supporters</b>	<b>13-14</b>
<b>Lance's Story</b>	<b>5-6</b>	<b>Project Home Success</b>		<b>10</b>

Dear Friends,

Despite improvement in the unemployment rate in New York City, nearly half of all New Yorkers lived at or near the poverty level in 2015. This fact has contributed to the record number of homeless individuals living in shelters and on the streets of our city.

Never before have ACE services been more in demand. With support from the private and public sectors, ACE has been able to enhance and expand our services to meet the needs of New York's less fortunate. So many of the men and women we serve all say the same thing at intake: all they want is an opportunity to work. In 2015, ACE continued to provide just that.



*James Martin with Maceo, who completed ACE's Housing Program in 2015.*

With the financial support of the New York City Council, ACE has developed a supported employment program that allows us to offer full-time employment to program participants with limited work histories and extreme barriers to employment. This initiative has created a motivated and vibrant workforce tasked with beautifying city streets and public spaces in Brooklyn, Queens and Manhattan.

In 2015, ACE connected with new referral partners located throughout New York City and doubled our outreach to existing partners, ensuring that every New Yorker has the opportunity to reclaim their lives by accessing ACE's services.

Our focus remained on our employment training and placement results in 2015, never more critical than in this time of crisis. Of all those who received training and placement services in 2015, 132 have secured full-time employment, with an amazing 60% one-year employment retention rate, proving that when afforded the opportunity to work, ACE participants take full advantage.

In our 23rd year, ACE continued to adapt to the needs of New York City and the population we serve. We thank everyone who stood with us during this difficult time in our city's history, ensuring that the notion of "opportunity" remains alive and well for all New Yorkers, even during the toughest of times.

Sincerely,

Henry Buhl  
ACE Founder

James Martin  
Executive Director



# OUR MISSION

The Association of Community Employment Programs for the Homeless (ACE) works with homeless men and women throughout New York City, providing job training, work experience and a lifetime support network to help our program participants achieve their goals and establish economic independence.

## Our Story

On a summer morning in 1992, Henry Buhl was leaving his loft on Greene Street in SoHo when a homeless man asked him for \$20. Figuring, “if you give a man a fish, he eats for a day; teach a man to fish, he eats for a lifetime,” Henry offered the man \$20 in exchange for sweeping the sidewalk in front of his building and then rallied the stores in his neighborhood to follow suit.

Within months, word had spread about the new initiative. Homeless men and women were eager to join the sweeping crew and start rebuilding their lives. Henry began to accept referrals from homeless shelters and soon founded the SoHo Partnership, followed by the establishment of other neighborhood-based initiatives in the years to follow.

ACE was created in 2010 as an umbrella organization to unify these local initiatives.

Today, ACE has grown to serve more than 500 people annually, offering vocational rehabilitation, workforce development services, adult education, job readiness, life skills training and industry specific certifications in our vocational program, Project Comeback; lifetime employment retention and support services in our aftercare program, Project Stay; and access to affordable housing through one of our most recent initiatives, Project Home.

Since 1992, we have helped over 2,500 homeless New Yorkers find full-time jobs, reconnect with their families and start new lives.

# OUR PROGRAMS

## Program Overview

In 2015, ACE provided vocational rehabilitation and workforce development services to over 500 New Yorkers in need. We take a three-part approach to achieving our mission of helping participants to obtain and maintain employment and transition to economic self-sufficiency:

**Project Comeback** empowers homeless individuals with the skills they need to successfully obtain full-time employment and achieve economic independence. Program participants gain supported work experience on the ACE maintenance crew, providing street sanitation and horticultural services throughout New York City. They also receive job readiness training (interview etiquette, workplace conduct), adult education (literacy, math, computer proficiency), industry specific certifications (Occupational Safety and Health Administration [OSHA], Food Protection, Custodial Maintenance), and vocational support services (job search assistance, mock interviews, access to professional clothing). Participants attend the program five days per week for an average of four to six months, graduating once they secure full-time employment.

**Project Stay** is our aftercare/retention program, which provides Project Comeback graduates with lifelong support and enrichment services aimed at helping them to retain employment, explore opportunities for career growth and continue to develop their skills, particularly those pertaining to financial literacy and money management. Project Stay offers regular support groups, one-on-one counseling, industry specific certifications and a variety of workshops geared toward professional advancement.

**Project Home** assists select Project Comeback graduates by providing them with a declining three-year, or flat one-year, rent subsidy to help meet the financial demands of living in their own homes. In return, participants must pursue education and/or industry specific certifications to increase their earning power and develop their career prospects.

# 2015 BY THE NUMBERS

ACE provides services to New York City's hardest-to-employ men and women. Seventy percent are chronically homeless, and over 95% report at least two consecutive years of unemployment or under-employment.

Much of ACE's success in serving this population can be attributed to the unique structure of its programs: soft and hard skills taught in the classroom are practiced in the field during our work experience component, and the lessons learned in the field are reinforced with real-time individualized counseling. This unique structure, refined and enhanced over 23 years, positions ACE to best serve New Yorkers who are homeless and chronically poor.

## Project Comeback

In 2015, out of **215** participants served, **132** have secured full time employment with an average salary of **\$10.11** an hour

2015 Overall



15,737

total number of classroom hours logged



20

secured food protection certification



19

secured janitorial certification



103

secured OSHA 10 general industry certification



11

secured OSHA 10 construction safety certification



500

homeless New Yorkers were served by ACE in 2015

## Project Stay



11

secured OSHA 30 general industry certification



1

secured OSHA 30 construction certification



2

secured OSHA forklift certification



3

secured food protection certification



1

secured boiler maintenance certification



2

secured CPR certification



1

secured culinary certification



15

secured OSHA 10 general industry certification



60%

one-year employment retention rate



47%

of graduates found independent housing



70%

reported being chronically homeless



6

graduates were provided with a housing subsidy

## Project Home

Since its launch, Project Home participants have seen an average wage growth of **60%** while receiving the housing subsidy.



100%

were unemployed before enrolling

# LANCE'S STORY: FROM SHELTER TO SUPERVISOR

Lance moved to New York City with his mother and father when he was seven. He had a middle-class upbringing and was never worried about financial insecurity. "My dad made good money as an accountant. I never imagined growing up that I could be homeless."

Lance graduated high school and immediately wanted to start working. He got a job as a bike messenger for a firm on the 86th floor of World Trade Center One. On the morning of September 11th, 2001, Lance locked up his bike and entered a deli across the street from the World Trade Center. As he put in his usual breakfast order, he was jarred by a series of explosions.

"Oh my God, a plane hit the World Trade Center."

"I looked out the window and thought, *oh my God, a plane hit the World Trade Center*. After a while, the deli filled with soot and debris and everyone started to panic. I panicked. I ran out of the deli and headed for the One train. When I got to the station the police were pushing people into the train. Everyone was yelling and crying. It took an hour to get to 34th Street, and that's when they made the announcement that Tower Two had collapsed. I was in a daze. Later that night, when I finally made it home to the Bronx, my parents and my grandparents broke down. They had thought I was gone."

"Finding myself homeless was like standing on the track and seeing a freight train coming at me."

Like many thousands of New Yorkers whose companies were devastated, Lance lost his job. He shifted gears and started taking classes at Devry University. For a decade, Lance maintained a series of steady jobs, but in 2013 his life took a tragic turn.

Lance had a good position working at the Department of Commerce, but budget cuts were implemented and he was laid off. At the time, he was living with his mother and



*Lance with Executive Director James Martin at graduation.*



*Lance and his father share a hug at graduation.*

father in a run-down building in the Bronx. His family was forced to vacate the apartment when they refused to pay rent after a bathtub fell through their ceiling. Lance had no income, no home and his family had nowhere to go.

Suddenly, Lance and his parents were homeless. They entered the New York City shelter system, and it was there that things went from bad to worse. After a short time in the shelter, Lance's mother unexpectedly passed away due to a heart attack. Lance was distraught and fell into a depression. Looking back on that time he says, "I took things for granted. Finding myself homeless was like standing on the track and seeing a freight train coming at me."

A counselor at the homeless shelter referred Lance to ACE's vocational program, Project Comeback. At ACE, Lance gained work experience on ACE's sanitation crew and the support he needed to build his resume and his confidence. After six months with ACE, Lance earned a full-time position as the crew supervisor for a local sanitation company.

## "Thank you for believing in me."

At the ACE graduation ceremony, Lance touched the audience when he pointed to his father and said, "I just want to make you proud." With tears in their eyes, they embraced.

In Lance's words, "Being helped by someone who doesn't know you, who is willing to give you a chance, that feels great. Because of those supporters, I am actually now in a position to give to others who want an opportunity. It is incredible."

Lance continues to flourish in his supervisory role. He rents an apartment in Staten Island and is enjoying his new life. He asked us to pass on this message, "Thank you for believing in me."



*Lance's father is emotional as his son shares about his journey.*



*Lance is now the Crew Supervisor of a local sanitation crew.*

*"I am pleased to be a supporter of the Association of Community Employment Programs for the Homeless or ACE. Because of the ACE program, the commercial corridors in my district are being taken care of by men and women who are transitioning from challenging circumstances to constructive and positive lives."*

- New York City Council Member Karen Koslowitz, District 29

# SUPPORTED EMPLOYMENT PROGRAM FLOURISHES

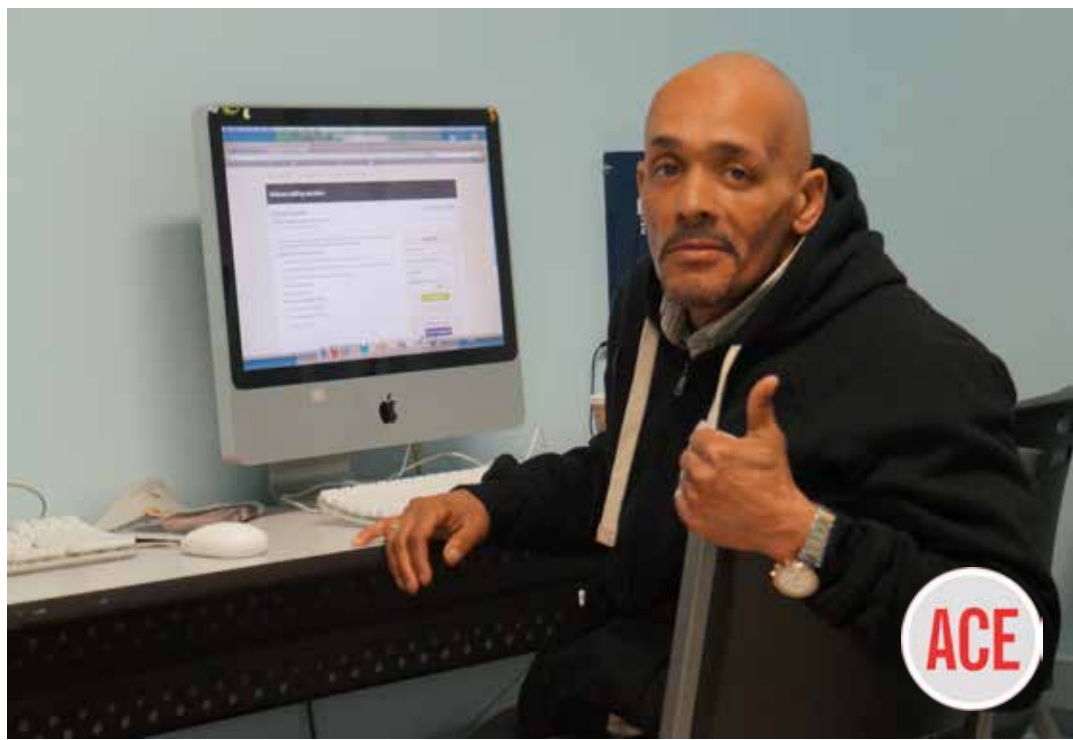
ACE participants face major barriers to employment, including diagnosed and undiagnosed mental illness, chronic addiction issues, and extensive criminal histories. Overcoming these obstacles takes hard work, dedication and most of all, an opportunity for employment.

Traditionally, supported employment programs have provided vocational services to those with disabilities, including intellectual disabilities, mental health issues, and traumatic brain injuries, among others. In 2015, ACE put a new spin on the supported employment model, adapting it to the needs of our program participants.

With the financial support of eleven New York City Council Members, via the 'Cleanup NYC' initiative, ACE has developed a supported employment program that offers full-time employment opportunities to the participants with the most extreme barriers to employment.

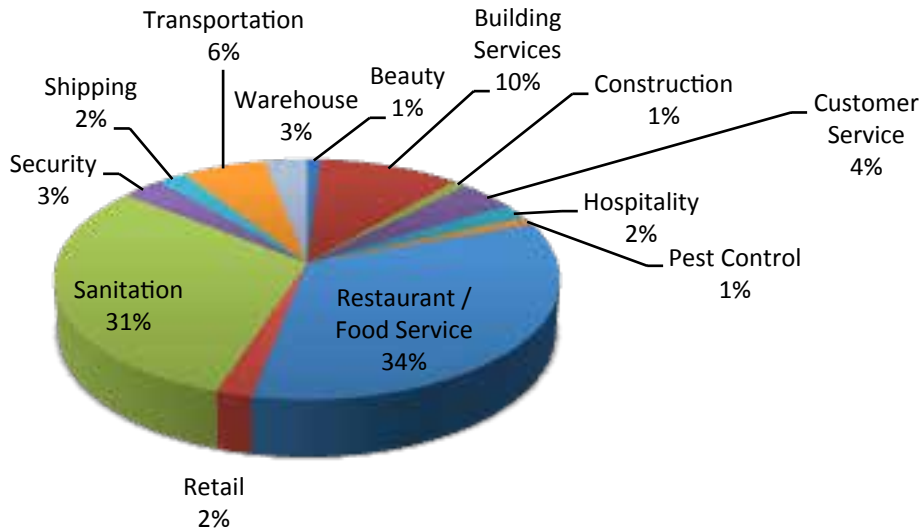
These men and women are hired full-time here at ACE and assigned to our *Contract Services Team*, tasked with providing sanitation and beautification services in City Council Districts located throughout New York City. Team members receive all of the employment retention services that ACE has to offer. They meet on a regular basis with ACE staff, receiving career guidance, financial advice, peer support and, most importantly, industry specific certifications. The results of this new initiative have been outstanding as 78% of those participants who have entered ACE's supported employment program have remained employed for at least 12 months.

With the support of the New York City Council, ACE has created a motivated and vibrant workforce, dedicated to beautifying city streets while building a stable future for themselves and their families.





# 2015 EMPLOYMENT PLACEMENT BY SECTOR



*"I have been so pleased with ACE's work. Residents and business owners deserve clean and safe streets and ACE's efforts have helped accomplish this in an area that has historically been difficult to keep clean. I appreciate their great work and their regular updates and check-ins, and have recommended their services to other Council Members and BIDs."*

- New York City Council Member Antonio Reynoso, District 34



# PARTNERSHIPS GROW WITH CONSORTIUM FOR WORKER EDUCATION AND COMMUNITY SERVICE SOCIETY

## Consortium for Worker Education

The Consortium for Worker Education, established in 1985, is a private non-profit that provides workforce development programs with technical assistance and program funding. In 2015, ACE was accepted as a community partner in their 'Jobs to Build On' portfolio.

This incredible honor means that ACE will join other leading workforce development providers in the network, sharing best practices within the industry. We will also receive vital funding to help subsidize the annual cost of Project Comeback.

We are proud to partner with this prestigious workforce development leader and we look forward to working together to change the lives of hundreds of less fortunate New Yorkers.

## Community Service Society

In 2015, for the third consecutive year, ACE was awarded a grant by the Community Service Society as part of the 'New York's Neediest' Campaign. This grant provides ACE graduates with funding for vocational and educational training opportunities. Select ACE graduates who benefit from the grant are featured in The New York Times.

In 2015, four ACE graduates were profiled in this historic New York publication. ACE is incredibly thankful for the support of the Community Service Society and proud to see the stories of our program graduates inspiring others throughout New York City.



# PROJECT HOME SUCCEEDS AND EXPANDS

Project Home assists select ACE graduates by providing a three-year rent subsidy to help them meet the financial demands of living in their own apartments. In return, participants must pursue educational opportunities or industry specific certifications in order to increase their earning power and develop their career prospects.

Project Home has seen incredible success since its launch in 2012. Each participant has seen significant increases in their earning power, with an average wage growth of 60% while receiving the subsidy.

In 2015, Maceo, Project Home's first participant, completed the housing program. Maceo entered Project Home in 2012, working as a line cook, earning \$12 an hour. Today, Maceo is the general manager of a food court at a well known transportation hub, having seen a total wage growth of nearly 200% over three years.

Late in 2015, ACE introduced Project Home - One Year. This initiative offers a housing subsidy of \$150 per month to those in ACE's supported employment program. In return, those receiving the subsidy must commit to career advancement by pursuing educational goals and industry specific certifications.

We are proud of the men and women who have transformed their lives in Project Home, and we look forward to new achievements for those enrolled in Project Home - One Year.

*"For years, ACE has served as a lifeline for small businesses who rely on their services to maintain the cleanliness of our city's streets. I applaud the leadership of ACE and its entire team for their unwavering dedication and exemplary work towards the beautification of the 35th Council District. "*

- New York City Council Member Laurie Cumbo, District 35



# OUR PARTNERS

On behalf of 500 New Yorkers served at ACE this year, we would like to thank all of our incredible community partners. You make it possible for so many men and women to achieve their potential and rejoin the workforce.



## Membership & Affiliations

AVRASA  
Consortium for Worker Education (CWE) / Jobs to Build On  
Food Bank for New York City  
New York State Department of Corrections and Community Supervision (DOCCS)  
New York City Department of Homeless Services (DHS)  
New York City Employment and Training Coalition (NYCETC)  
New York City Human Resources Administration  
ProLiteracy  
Workforce1

## Education & Training

Metropolitan College of New York (MCNY)  
New York City Department of Health & Mental Hygiene  
New York Safety & Training  
WrightCo Environmental Solutions

## Supplementary Services

Apple  
Bottomless Closet  
Career Gear  
Community Service Society (CSS)

Dress for Success  
Legal Action Center  
Nazareth House / Free Tax Preparation Clinic  
New York Public Library  
Popular Community Bank  
Project Renewal Next Step  
Project Renewal 3rd Street Clinic  
St. John's Bread & Life  
Strong Self  
That Suits You  
The Financial Clinic  
Valley National Bank

## Additional Partners

Highbridge Community Development Corporation  
John Jay College  
Rikers Island GreenHouse Program  
Uniform  
Basilica of St. Patrick's Old Cathedral

## Most Frequent Referral Partners

ACACIA  
ACI Chemical Dependency  
Addicts Rehabilitation Center (ARC)  
ASCNYC  
Back on My Feet  
Black Veterans for Social Justice  
Bowery Mission  
CAMBA  
Canarsie Aware  
Casa Esperanza  
Center for Alternative Sentencing and Employment Services (CASES)  
Damon House  
Department of Corrections and Community Supervision  
Educational Alliance / Pride Site  
Food Bank for the City of New York  
Greenhope Services for Women

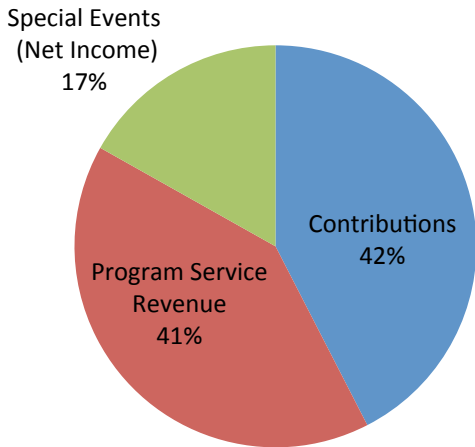
Harlem Justice Center  
Harlem Park Hotel  
Help USA  
Kings County Hospital Center  
Lower East Side Service Center  
NAICA/Bronx Park Transitional Facility  
New York City Relief  
New York City Rescue Mission  
North Crown Heights Outreach Center  
NYTC, Inc. Outpatient Programs  
Odyssey House  
Palladia  
Peter Young Housing  
Phoenix House  
Promesa  
Rikers Island GreenHouse Program  
Samaritan Village  
Serendipity  
Turning Point  
VIP Community Services, Casa Banome  
Volunteers of America Jamaica Employment Center

## Sanitation Services

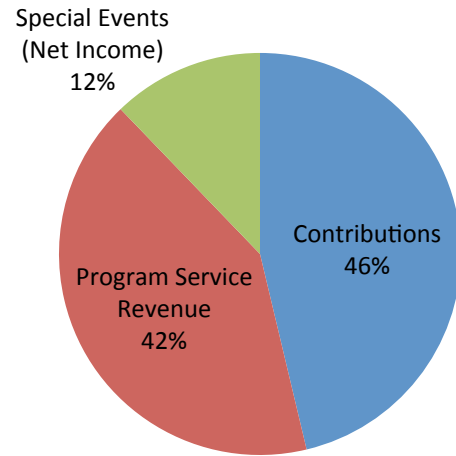
Meatpacking Improvement Association (MPIA)  
Neighborhood Plaza Partnership (NPP)  
SoHo Broadway Initiative  
Councilwoman Chin  
Councilman Constantinides  
Councilwoman Cumbo  
Councilman Dromm  
Councilwoman Ferreras  
Councilman Greenfield  
Councilwoman Koslowitz  
Councilman Lander  
Councilman Levine  
Councilman Menchaca  
Councilman Reynoso

# FINANCIALS

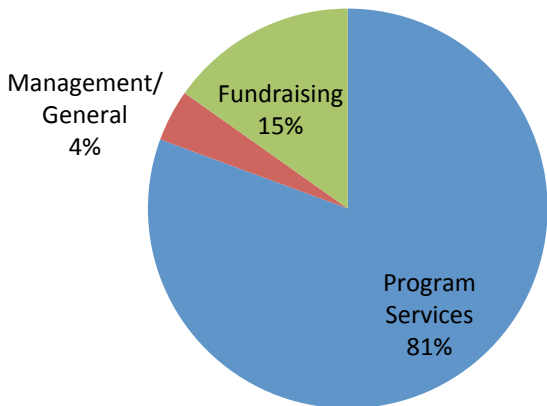
**2014 Revenue**



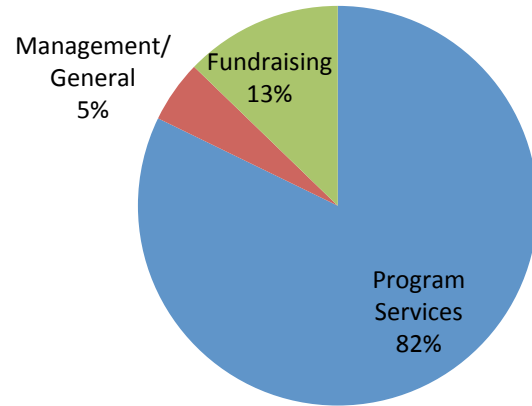
**2015 Revenue**



**2014 Expenses**



**2015 Expenses**



<b>Revenue</b>	<b>2014</b>	<b>2015</b>
Contributions	\$1,250,954	\$1,639,062
Program Service Revenue	1,199,554	1,470,919
Special Events (Net)	496,631	432,054
<b>TOTAL REVENUE</b>	<b>\$2,947,139</b>	<b>\$3,542,035</b>
<b>Expenses</b>	<b>2014</b>	<b>2015</b>
Program Services	\$2,391,993	\$2,724,891
Management/General	124,449	186,946
Fundraising	450,959	423,230
<b>TOTAL EXPENSES</b>	<b>\$2,967,401</b>	<b>\$3,335,067</b>
<b>NET INCOME</b>	<b>(-\$20,262)</b>	<b>\$206,968</b>

To view our 2015 audited financial statement please visit [www.acenewyork.org](http://www.acenewyork.org) or send a request to [info@acenewyork.org](mailto:info@acenewyork.org).

# OUR TEAM

## Staff:

**Henry Buhl**, Founder  
**James Martin**, Executive Director  
**Elizabeth McNierney**, Director of Program Services  
**Eugene Torres**, Director of Finance & Human Resources  
**Sandra Sanches**, Director of Public Relations and Major Gifts  
**Travis Tinney**, Director of Development  
**Jessica Cannold**, Development Manager  
**Rachel Cohen**, Admissions and Vocational Coordinator  
**Emmanuel Fernandez**, Job Developer  
**Tawana Jackson**, Project Stay Coordinator  
**Davika Singh**, Project Stay Associate  
**Djaratou Aney**, Education Coordinator  
**Jacquelyn Kroeze**, Education Associate  
**Steve Martin**, Senior Crew Supervisor  
**John Kaminski**, Crew Supervisor  
**Paul Manzi**, Water Truck Operator  
**Leo Gil**, Quality Control Officer  
**Gwendolyn Matos**, Database & Office Manager

## SUPPORTERS

Thank you so much for your support. Our work would not be possible without the generous support of the individuals, businesses, and foundations listed below. These gifts were made between 1/1/2015 and 12/31/2015.

**\$100,000 and up**  
The Association of Charles Evans Housing Foundation

The Buhl Foundation

**\$50,000 - \$99,999**  
Paulson Family Foundation

The Harry & Jeanette Weinberg Foundation, Inc.

**\$25,000 - \$49,999**  
Bloomberg Philanthropies  
Carlos G. Morrison

Irvin Stern Foundation  
Red Apple Group

Robert Gruendel  
Sorgente Group Foundation for Art and Culture

**\$15,000 - \$24,999**  
Abhay & Michele Deshpande  
Denise Rich  
Douglas Elliman  
Fiduciary Trust International  
General Property Management  
The Cygnet Foundation  
The J.M. Kaplan Fund  
The Leyli Foundation

**\$10,000 - \$14,999**  
291 Foundation  
Blanche F. Ittleson Foundation LLC  
Colleen Hess  
Cynthia Wainwright-Berger  
The Smith Family Foundation

Frances Hill  
John S. and Cynthia L. Reed Foundation  
Josephine C. Wilkinson Charitable Lead Trust  
Kenneth Klein  
Laduree  
Marc Cenedella  
Nancy Wender & Steven Rand  
Overlook Foundation  
R & K Foundation  
Scholastic, Inc.  
The Leeds Family Foundation  
W.B. Mason

## Board of Directors:

**Henry Buhl**, Founder, ACE  
**Stuart Epstein**, Agent, Devlin McNiff Real Estate  
**Kenneth Klein**, CEO, Fair Market Life Settlements Corp.  
**Nicole Oge**, Global Chief Marketing Officer, Douglas Elliman Real Estate  
**Steven Rand**, Executive Director, Apexart  
**James Rhodes**, Co-Founder, Magnuss Ltd.  
**Catherine Rice**, Consultant  
**Richard Robinson**, President, Chairman and CEO, Scholastic, Inc.  
**Monsignor Donald Sakano**, The Basilica of St. Patrick's Old Cathedral



**\$5,000 - \$9,999**

240 Centre Street Condominium  
 40 Worth Associates  
 7th Avenue South Alliance  
 Annette B. Johnson  
 Barbara and Donald Tober  
 Foundation  
 Bloomingdale's  
 Blue Apron, Inc.  
 Caroline Halmi  
 Cash Donations  
 Christian Buhl  
 LF 419 W. Broadway, LLC.  
 Curtis Erickson  
 Eaton Family Foundation  
 Elizabeth Lewinsohn  
 Food Bank for New York City  
 G-Shock  
 George L. Olsen  
 James Ermilio  
 Jewish Community Foundation  
 Kenneth A. Totilo  
 Laurence C. Leeds  
 Lexington Partners, Inc.  
 Marla Wolf  
 Nancy L. Hunt  
 Nicklas Family Foundation  
 Paco Bernaldo der Quiros  
 Progress Investment  
 Management Company Fund  
 Schifter Family Foundation  
 Sixty Hotel  
 Stephen P. Hanson  
 Steven T. Webb  
 The Greenwich Hotel  
 The MUFG Foundation, Inc.  
 The Randolph Foundation  
 Two Sigma Investments, LLC  
 Werner Notbauer  
 William H. Donner Foundation

**\$1,000 - \$4,999**

10 Bleecker Street Owners Corp.  
 109 Prince St. Condo Association  
 114 Green LLC  
 119 Greene Street  
 131 Prince Street Cooperative,  
 Inc.  
 151 Spring Realty LLC  
 156 Franklin Co-Operative, Corp.  
 176 Duane Street, LLC  
 180 Duane Street, LLC  
 19-21 Leonard Street Condo  
 2 Prince Condominium  
 200 Varick Street Associates,  
 LLC  
 376 West Broadway Enterprises  
 382 West Broadway  
 39 Vestry Street Condominium  
 436 Realty, LLC  
 465 West Broadway Cooperative,  
 Inc.  
 48 Walker Street  
 560 Associates, LLC  
 568 Broadway Property,  
 LLC.  
 57 Reade Street  
 Condominium

594 Broadway Associates,  
 LLC  
 91 Greene, LLC  
 A. Trenkmann Estate, Inc.  
 Adam J. Oestreich  
 Adidas  
 Alternative Apparel  
 Andrea Schiferl  
 Anna Gerzon  
 Annaliese Soros  
 Anouk Nora  
 Art Base, Inc.  
 Artemide, Inc.  
 Axel Stawski  
 Balenciaga  
 Bedford-Downing Block  
 Association  
 Birchbox  
 Blue Zees Real Estate  
 Bogner  
 Bonnie Pfeifer-Evans  
 Brian Vickers  
 Burger & Barrel  
 C.A.L. Foundation  
 Calliope Realty Associates  
 Camille A. Knoll  
 Carol Friedman  
 Chaves & Perlowitz LLP  
 Christiane Dawson  
 Christopher H. Luce  
 Christopher R. Leonard  
 Christopher Toscano  
 Connie Tarrant  
 Crosby Street Hotel  
 Cutler and Gross  
 CVJ Corporation  
 Daniel Napoli  
 Deborah Meijer  
 Development Group LLC  
 Dina Pavlova  
 Dog Owners of Tribeca  
 Dom NY, Inc.  
 Donald and Barbara Zucker  
 Foundation  
 Donna A. Soloway  
 Donna Karan New York  
 Donna Poyiadjis  
 Donors Trust Inc.-Grants  
 Account  
 Douglas Elliman  
 Earle I. Mack Charitable  
 Trust  
 eBay  
 Edmund M. Emrich  
 Edward & Marjorie  
 Goldberger Foundation  
 Edward Baquero  
 Edward Bramson  
 Edward N. Yeil  
 Elise Thoron  
 Elizabeth McCaughey  
 Elizabeth Thompson  
 Eric Joost  
 Ernst W. Aebi  
 Eva Shaw Designs  
 Foods of New York Inc.

Francesco Galesi  
 Friends of Duane Park  
 General Hardware Mfg. CO.,  
 Inc.  
 George S. Kaufman  
 Ginyee Y. Chu  
 Gordon K. DuGan  
 Greg Buechele  
 Gudrun Sjödéns Store  
 Halstead Management Co.  
 Harry Spitzer, Inc.  
 Helen Ficalora  
 Henry Buhl  
 Herman Goldman  
 Foundation  
 Howard D. Sobel  
 Independent Media  
 Inson Wood  
 Janet Goldman  
 Janice Alida Joseph  
 Jean Bortner  
 Jeffrey Altshuler  
 Jeffrey Tarrant  
 Joanna Pousette-Dart  
 John C. Gruendel  
 John J. Pasquale  
 John McGillian  
 John N. Irwin  
 Jorge Cruise Foundation  
 Jorge Iragorri  
 Joseph  
 Joshua Pickard  
 Journelle  
 Julie Kwak  
 Justin Christopher  
 Katie P. Gerlach  
 Keetsa Inc.  
 Kenneth Mortenson  
 Kranjac Tripodi & Partners  
 LLP  
 Lafayette-Astor Associates,  
 LLC  
 Laight Street Apartments  
 Lf East 21 Property Co LLC  
 Lion's Pride Foundation  
 Lisa L. Barry  
 Longchamp  
 Louis Vuitton NA, Inc.  
 Lure  
 Maja Serdarevic  
 Marianna Olszewski  
 Marie-France Buhl  
 Mark & Leslie Sillcox  
 Michael Parley  
 Midboro Management  
 Molteni Dada  
 Monique Grignard  
 Nicole Oge  
 Osswald Inc.  
 Pamela Michaelcheck  
 Paul Sack  
 Paul Smith  
 Pep Real Estate and  
 Mortgage Brokerage  
 Prince-Wooster Corp.

Quirky Inc.  
 Rancho Feedwell Foundation  
 Reade Court Condominium  
 Robert M. Tirschwell  
 Rock Paper Photo  
 Rolf Heitmeyer  
 Roots  
 Roxy Hotel  
 Salon Realty AAF 396 West  
 Broadway  
 Samuel Guillory  
 Schwinghammer Light LLC  
 Serge Maksud  
 Seymour Feldman Foundation  
 Inc.  
 Shelby White  
 SoHo Grand Hotel  
 Soho Greene Street LLC  
 SoHo Strut LLC  
 Sourab Choudhury  
 Spring Street Natural  
 Restaurant  
 Springtree Condominium, LLC  
 Stephanie Rader  
 Stephen Corelli  
 Steve Forbes  
 Steven Wils  
 Svetlana Smith  
 Tanja Dreiding Wallace  
 Taschen  
 Ted Baker London  
 The Barnert Temple  
 Congregation B'Nai Jeshurun  
 The Dutch  
 The Eddie and Jo Allison  
 Smith Family Foundation  
 The Emily Hall Tremaine  
 Foundation  
 The Fanwood Foundation  
 The George A. Long  
 Foundation  
 The Hubert Street  
 Condominium  
 The Joshua Mailman  
 Foundation  
 The Mercer Hotel  
 The Rock Foundation  
 The Samuel J. & Ethel Lefrak  
 Charitable Trust  
 The Stephen P. Hanson Family  
 Foundation, Inc.  
 The Sugar Loaf Condominium  
 The Webster  
 Thompson Chemists &  
 Cosmetics  
 Tory Brewer  
 Tribeca Court Condominium  
 Tribeca North Condominium  
 Trump Soho  
 USM U. Schaerer Sons, Inc.  
 Weeden Foundation  
 William Crudup  
 William G. Gahagan  
 Wolverine  
 Wooster Realty, Ltd.

*“I will always be grateful to ACE because they gave me a stepping stone to my new life. They put the opportunity in front of me – all I had to do was grab it. They helped me find hope and a new perspective on life. I feel blessed to have such positive and loving people in my life – ACE is like my family.”*

– Lillian, ACE graduate



We thank each individual donor, business owner, charitable foundation, elected official and program partner that works with ACE to makes these life-changing services possible. Together, we are putting New Yorkers back to work.



598 Broadway, 7th Floor  
New York, NY 10012  
Tel: 212.274.0550 Fax: 646.613.8276  
[www.acenewyork.org](http://www.acenewyork.org)

[info@acenewyork.org](mailto:info@acenewyork.org)  
[www.facebook.com/aceprograms](https://www.facebook.com/aceprograms)  
[www.twitter.com/acenewyork](https://www.twitter.com/acenewyork)

